

# THE ANASTASIA RANGE



**ANASTASIA 45**

Now on display at  
Edmondson  
Park

DOUBLE STOREY

35

39

45

MIN. LOT WIDTH

14.5M



# OUR DEAR CUSTOMER

---

I am Vince Camera, and I am the CEO and founder of Lily Homes. For the last 20 years, we have prided ourselves on offering customers top quality housing and services whilst providing affordable pricing on all of our highly commended designs and inclusions. The purpose of this address is to solidify a promise that Lily Homes will construct for you a dwelling of high standard and a place for you to call home.

The key to any successful interaction between customer and service provider is trust. And in addition to building your dwelling, we intend to build a trust that will serve as a foundation throughout the entire building process.

I look forward to working together.

Yours Truly,

Vince Camera

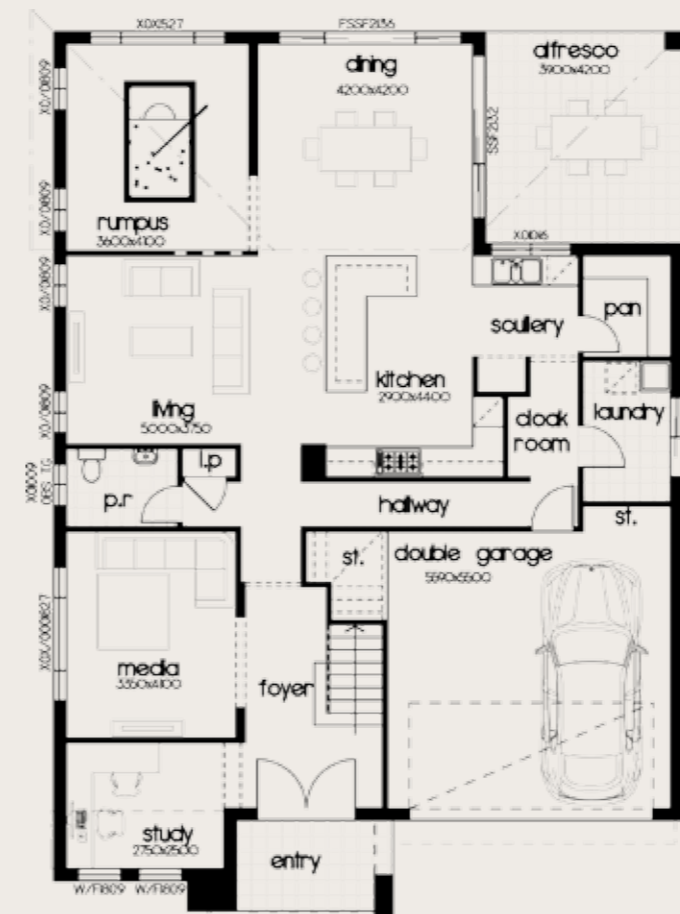


# ANASTASIA 35

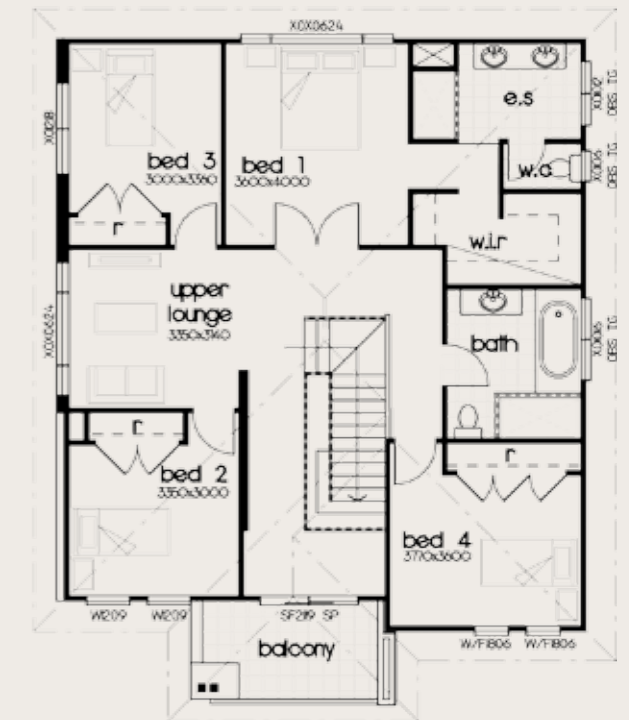
4 3 2 330.7M2

Ground floor	145.1m <sup>2</sup>
First floor	118.2m <sup>2</sup>
Garage	36.8m <sup>2</sup>
Alfresco	16.4m <sup>2</sup>
Porch	6.2m <sup>2</sup>
Balcony	8.0m <sup>2</sup>
Overall width	12.40m <sup>2</sup>
Overall depth	19.89m <sup>2</sup>

- The Anastasia 35 is a family lifestyle dream, with a large range of rooms to entertain within
- You get the best of both worlds, you can have the privacy and also open living with options to choose what section of the home you want to use



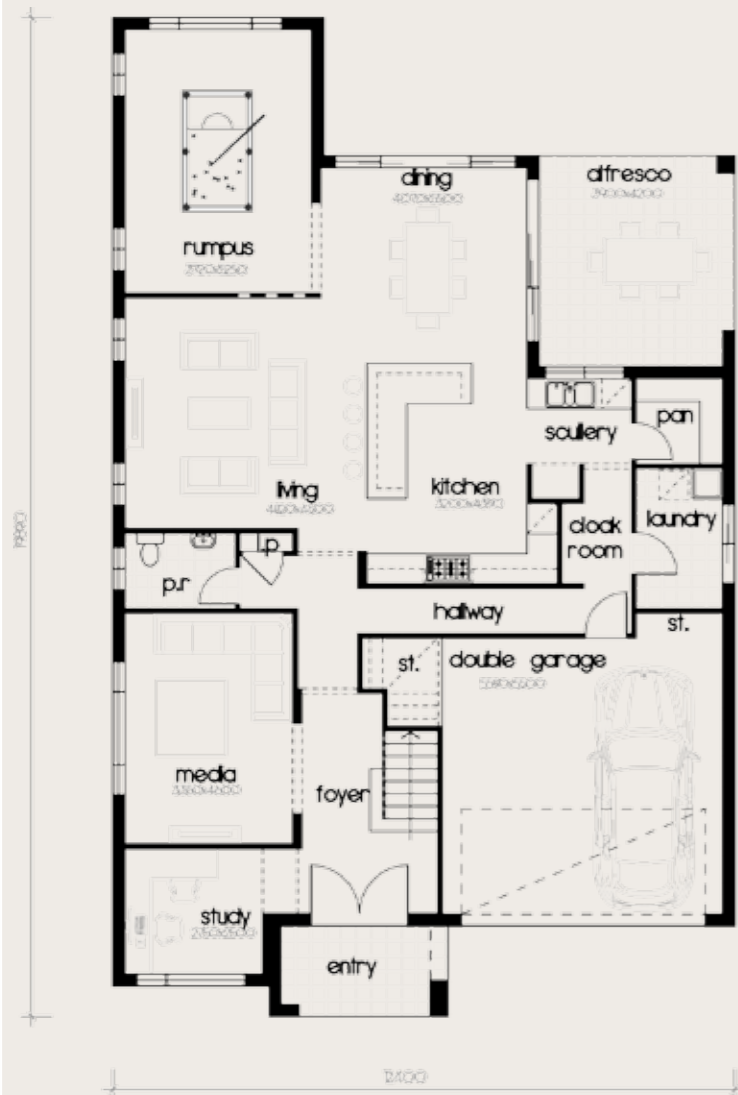
GROUND FLOOR



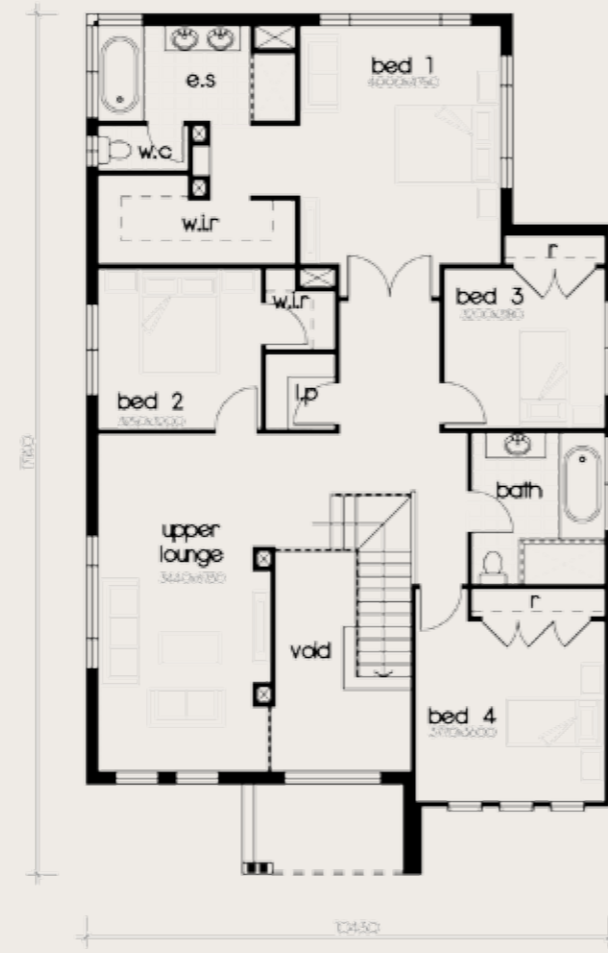
FIRST FLOOR



# ANASTASIA 39



GROUND FLOOR



FIRST FLOOR

 4
  3
  2
  365.6M2

Ground floor	155.0m <sup>2</sup>
First floor	153.7m <sup>2</sup>
Garage	34.4m <sup>2</sup>
Alfresco	16.4m <sup>2</sup>
Porch	6.1m <sup>2</sup>
Overall width	12.64m <sup>2</sup>
Overall depth	19.89m <sup>2</sup>

- The Anastasia 39 is grand every angle you turn, with the opened walkways and living areas
- From the flow of the stairway up into the double doors entering the master bedroom, there is always and feature to make it feel more luxurious

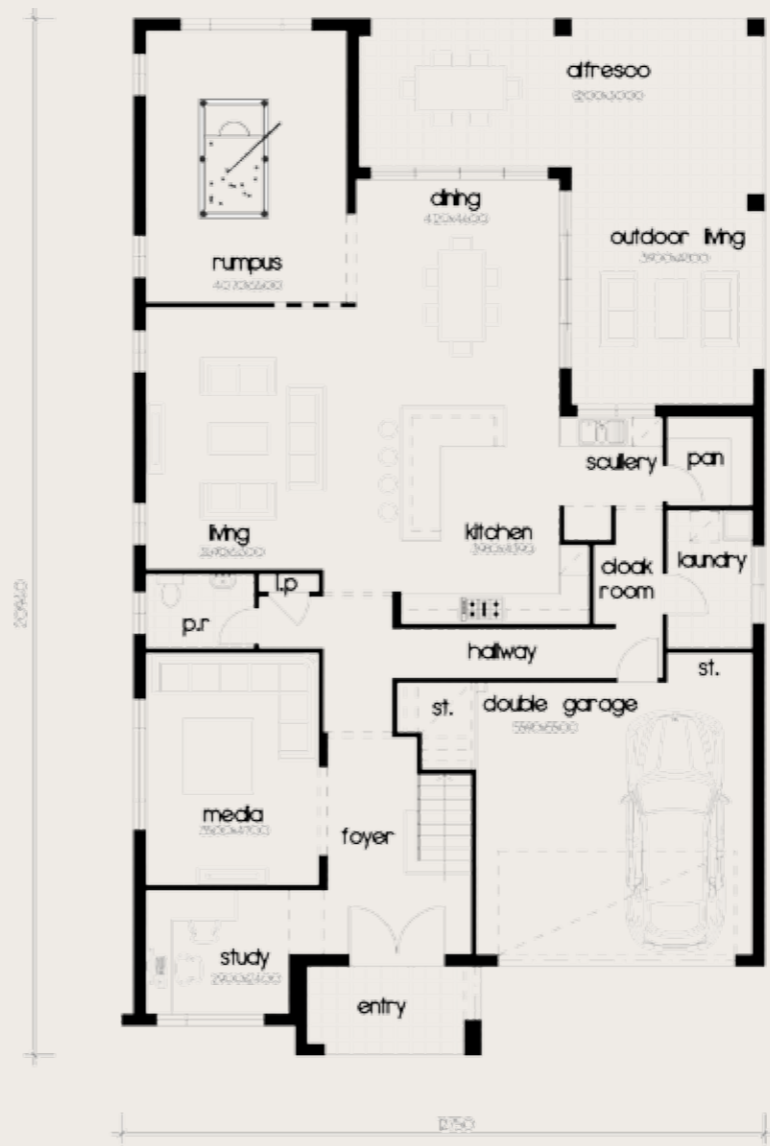


# ANASTASIA 45

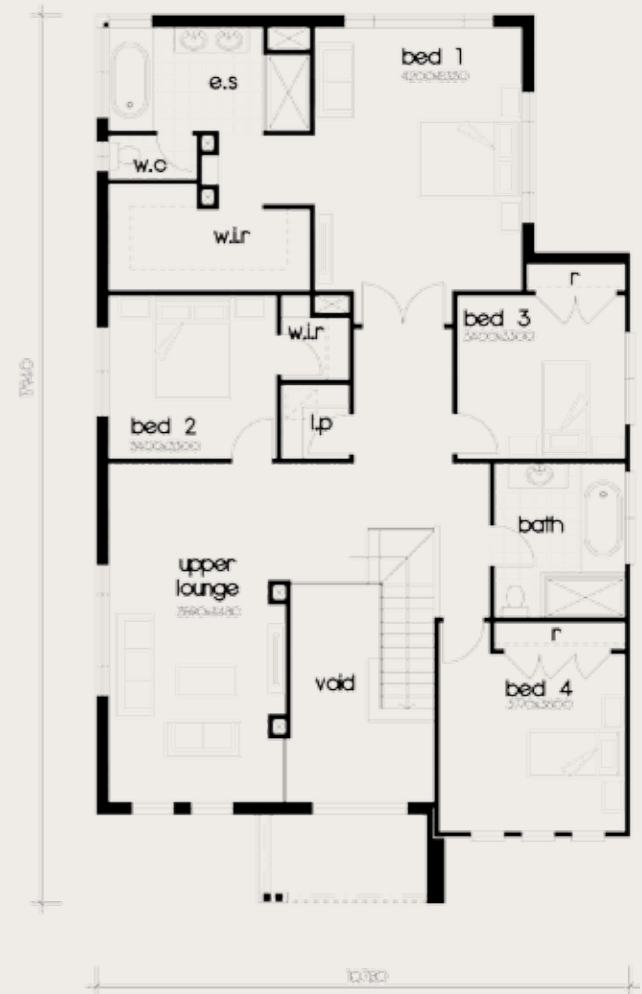
4  
 3  
 2  
 421.3M2

Ground floor	.....	170.3m <sup>2</sup>
First floor	.....	166.6m <sup>2</sup>
Garage	.....	34.6m <sup>2</sup>
Alfresco	.....	43.3m <sup>2</sup>
Porch	.....	6.5m <sup>2</sup>
Overall width	.....	13.23m <sup>2</sup>
Overall depth	.....	20.94m <sup>2</sup>

· The Anastasia 45 is a home with everything plus more. From the moment you walk inside its double door grand entrance you will discover the true meaning of space and exceptional style  
 · With Multiple living areas, extra large wrap around alfresco and option to customize nearly everything in the home, it's guaranteed to impress



GROUND FLOOR



FIRST FLOOR

# THE ANASTASIA FACADE RANGE

The Anastasia range is complimented by 5 facade options that are offered on this design. All facades from Lily Homes are quoted in face brick, however all other architectural elements still remain. With a wide range of variety between each facade and customization encouraged, there is all the more reason the Anastasia range is for you.



Save  
with



.....

Call our team on **9826 9777** or visit us at one of  
our two locations or online **[lilyhomes.com.au](http://lilyhomes.com.au)**

Terms and conditions apply.