

# THE FRANGIPANI RANGE



**FRANGIPANI**  
Now on display at  
Edmondson  
Park

SINGLE STOREY 21 25 29 MIN. LOT WIDTH 15M



# OUR DEAR CUSTOMER

---

I am Vince Camera, and I am the CEO and founder of Lily Homes. For the last 20 years, we have prided ourselves on offering customers top quality housing and services whilst providing affordable pricing on all of our highly commended designs and inclusions. The purpose of this address is to solidify a promise that Lily Homes will construct for you a dwelling of high standard and a place for you to call home.

The key to any successful interaction between customer and service provider is trust. And in addition to building your dwelling, we intend to build a trust that will serve as a foundation throughout the entire building process.

I look forward to working together.

Yours Truly,

Vince Camera

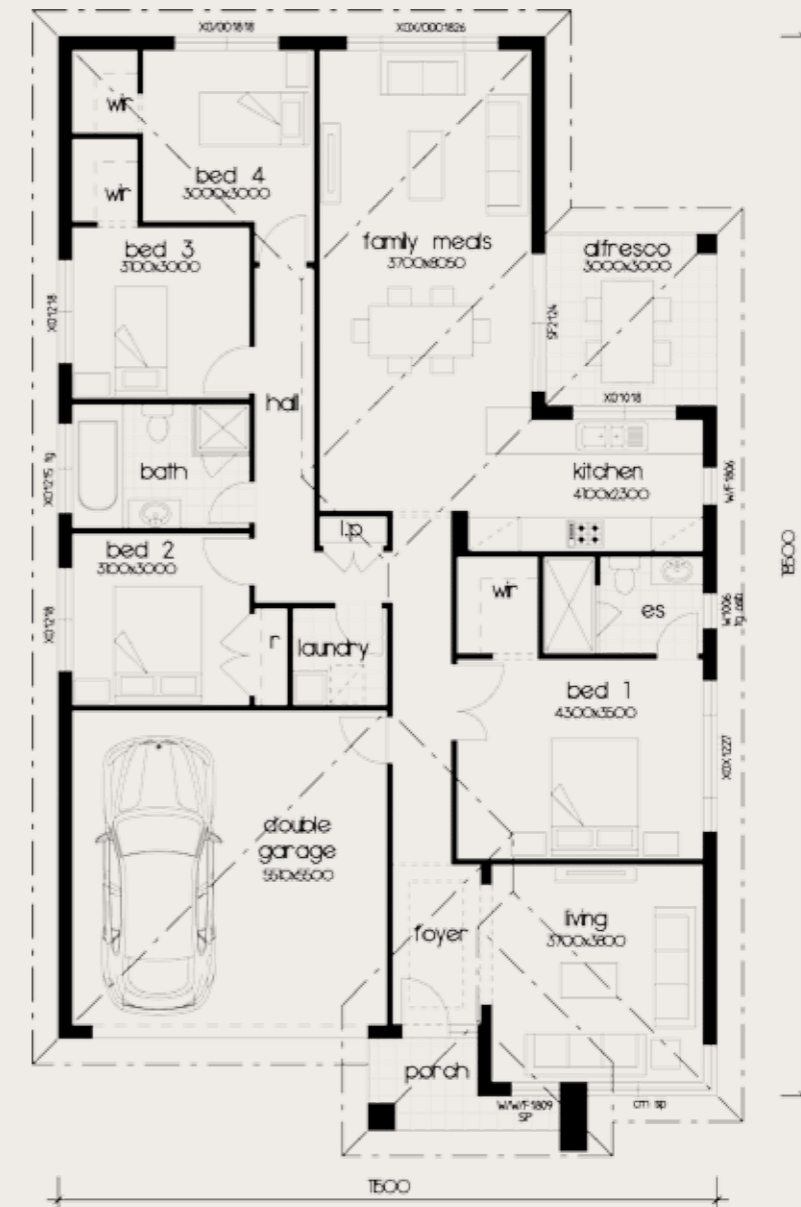


# FRANGIPANI 21

4 
 2.5 
 2 
 199.2M2

Ground floor	.....	153.5m <sup>2</sup>
Garage	.....	32.5m <sup>2</sup>
Alfresco	.....	8.5m <sup>2</sup>
Porch	.....	3.9m <sup>2</sup>
Alfresco	.....	9.0m <sup>2</sup>
Overall width	.....	11.5m <sup>2</sup>
Overall depth	.....	18.5m <sup>2</sup>

· The Frangipani 21.5 for a home for people with a limited space to work with but brings a home design alive by using every inch to create a home and entertains dream  
 · An open planned kitchen and alfresco can brighter up the area and create an illusion of a bigger area. There is something for everyone with this design

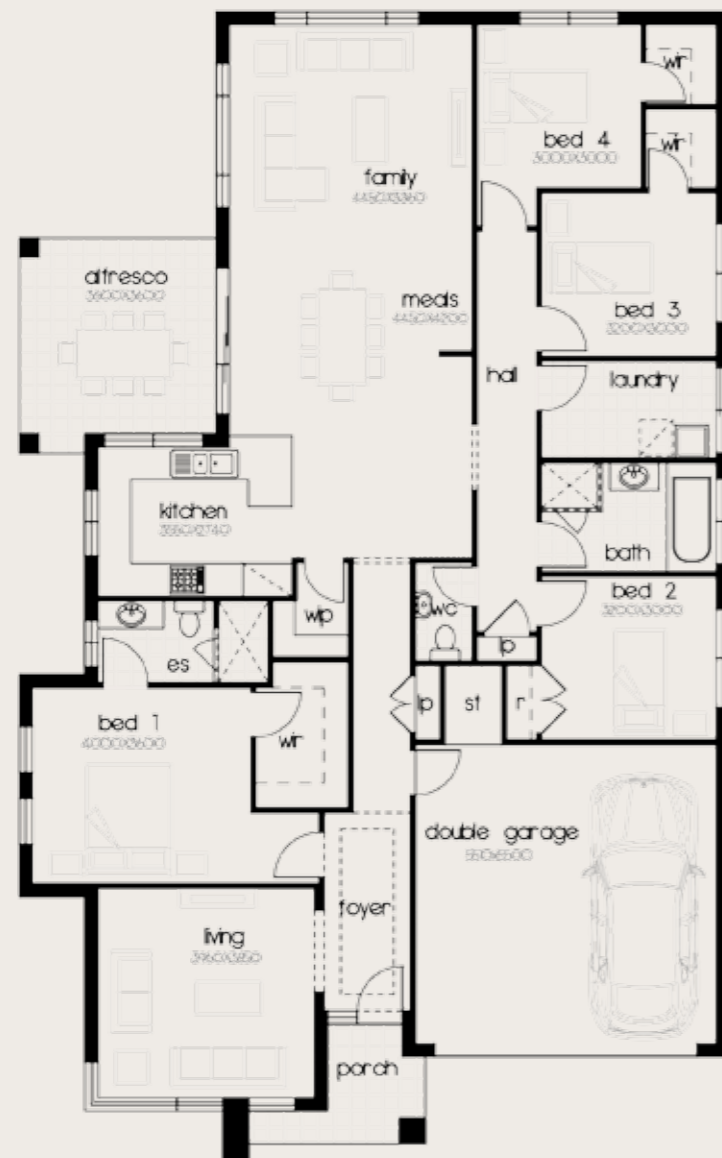


FLOOR PLANS



# FRANGIPANI 25

4 bedrooms 2.5 bathrooms 2 cars 234.9M2



Ground floor	.....	183.4m <sup>2</sup>
Garage	.....	33.1m <sup>2</sup>
Alfresco	.....	13.4m <sup>2</sup>
Porch	.....	5.0m <sup>2</sup>
Overall width	.....	13.0m <sup>2</sup>
Overall depth	.....	21.16m <sup>2</sup>

- The Frangipani 25 is a home with everyday living in mind. This home has been newly introduced into our range and offers loads of potential; it can fit on most corner blocks, or a normal 15 wide block
- The perfectly positioned kitchen offers great views out to the alfresco, with a serving window and living areas leading you outside, this home is one that will not go unnoticed

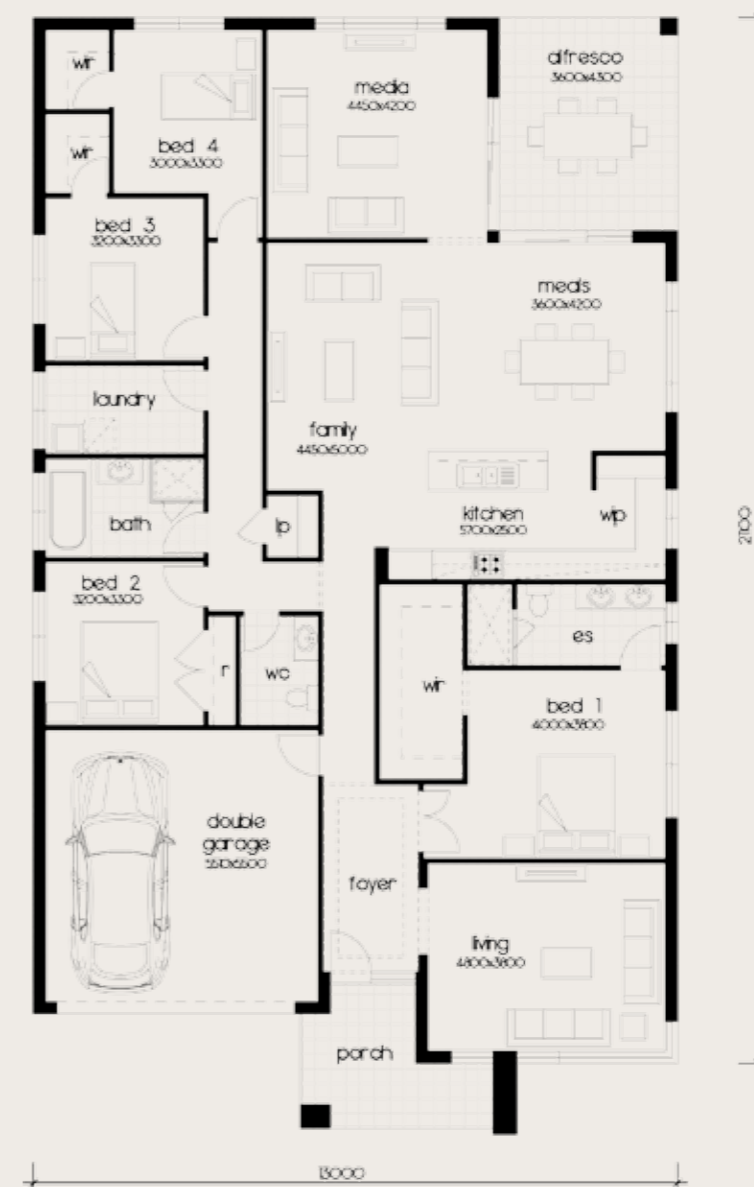


# FRANGIPANI 29

4 beds 2.5 baths 2 cars 274.5M2

Ground floor	.....	217.0m <sup>2</sup>
Garage	.....	33.0m <sup>2</sup>
Alfresco	.....	15.5m <sup>2</sup>
Porch	.....	9.0m <sup>2</sup>
Overall width	.....	13.0m <sup>2</sup>
Overall depth	.....	21.1m <sup>2</sup>

- The Frangipani 29 is a great large single storey home for families and large planned lifestyles.
- The living and kitchen area connecting and becoming one gives you the space you have always wanted. It gives you the opportunity to do anything within this space. The media in this house is a major bonus as it can be hidden away from the home just like the 3 bedrooms down the side of the home.



FLOOR PLANS

# THE FRANGIPANI FACADE RANGE

The Frangipani range is complimented by 5 facade options that are offered on this design. All facades from Lily Homes are quoted in face brick, however all other architectural elements still remain. With a wide range of variety between each facade and customization encouraged, there is all the more reason the Frangipani range is for you.



Save  
with



.....

Call our team on **9826 9777** or visit us at one of  
our two locations or online **[lilyhomes.com.au](http://lilyhomes.com.au)**

Terms and conditions apply.