

# THE SAVANNAH RANGE



SINGLE STOREY

17

18

20

MIN. LOT WIDTH

10M



# OUR DEAR CUSTOMER

---

I am Vince Camera, and I am the CEO and founder of Lily Homes. For the last 20 years, we have prided ourselves on offering customers top quality housing and services whilst providing affordable pricing on all of our highly commended designs and inclusions. The purpose of this address is to solidify a promise that Lily Homes will construct for you a dwelling of high standard and a place for you to call home.

The key to any successful interaction between customer and service provider is trust. And in addition to building your dwelling, we intend to build a trust that will serve as a foundation throughout the entire building process.

I look forward to working together.

Yours Truly,

Vince Camera

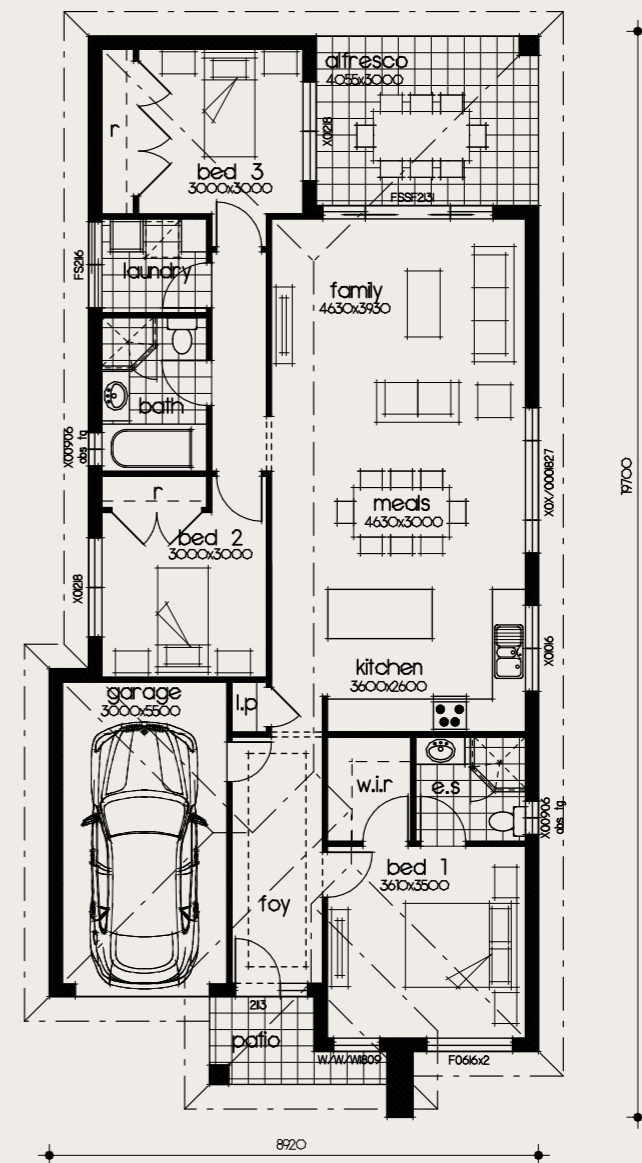


# SAVANNAH 17

 3
  2
  1
  156.2M2

Ground Floor	.....	120.7m <sup>2</sup>
Garage	.....	18.7m <sup>2</sup>
Porch	.....	4.4m <sup>2</sup>
Alfresco	.....	12.5m <sup>2</sup>
Overall width	.....	8.920m <sup>2</sup>
Overall depth	.....	19.700m <sup>2</sup>

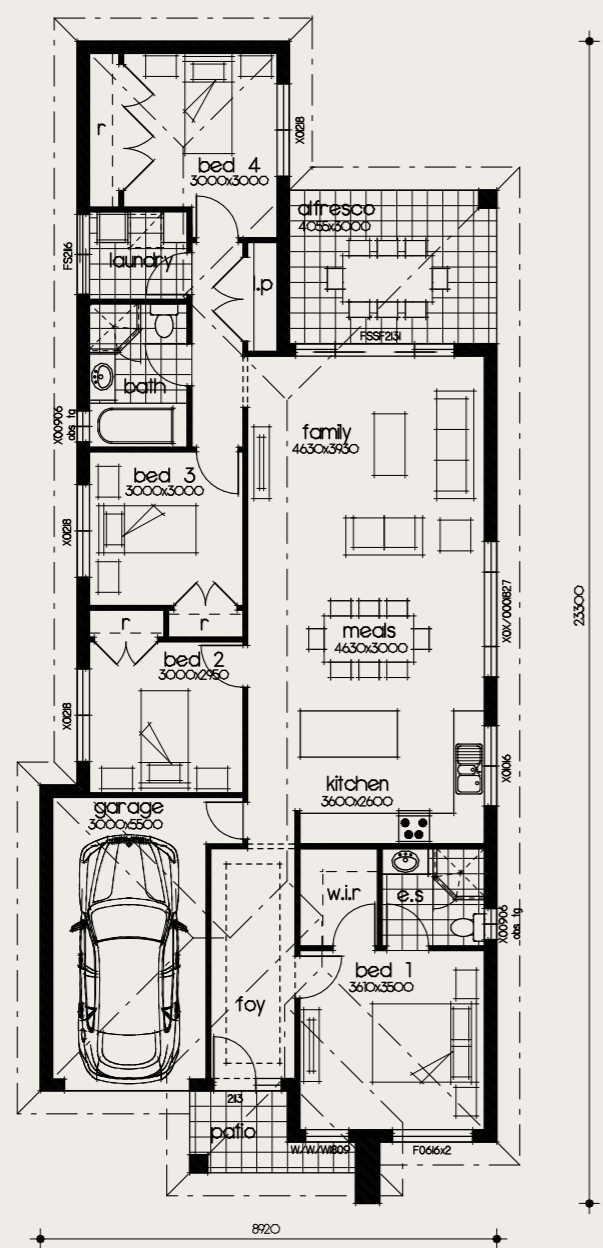
- Perfect for a smaller size block
- Practical 3 bedroom home
- Great starting out home for new families and first home buyers
- Bedrooms are separated from living areas
- A wrap around kitchen bench and island opening to the living areas and Alfresco



FLOOR PLANS



# SAVANNAH 18



FLOOR PLANS

 4
  2
  1
  169.1M2

Ground Floor	.....	133.1m <sup>2</sup>
Garage	.....	19.4m <sup>2</sup>
Porch	.....	4.4m <sup>2</sup>
Alfresco	.....	12.2m <sup>2</sup>
Overall width	.....	8.920m <sup>2</sup>
Overall depth	.....	23.300m <sup>2</sup>

- Perfect for a smaller size block
- Practical 4 bedroom home
- Great starting out home for new families and first home buyers
- Bedrooms are separated from living areas
- A wrap around kitchen bench and island opening to the living areas and Alfresco

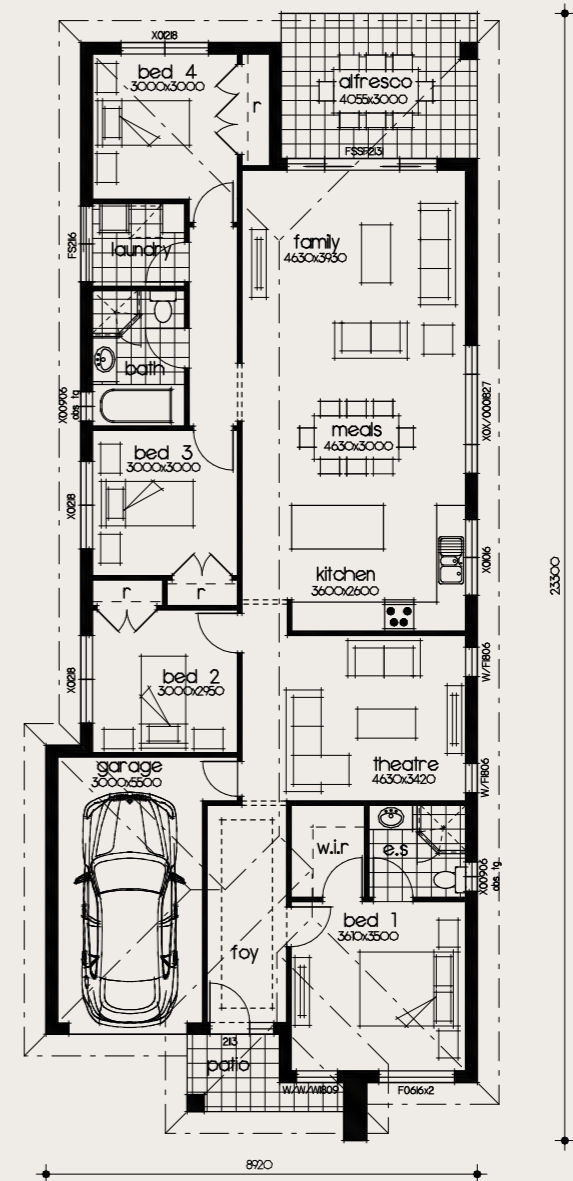


# SAVANNAH 20

4 beds 2 baths 1 garage 182.4M2

Ground floor	.....	147.4m <sup>2</sup>
Garage	.....	19.4m <sup>2</sup>
Porch	.....	4.4m <sup>2</sup>
Alfresco	.....	12.2m <sup>2</sup>
Overall width	.....	8.920m <sup>2</sup>
Overall depth	.....	23.300m <sup>2</sup>

- Perfect for a smaller size block
- Practical 4 bedroom home
- The Savannah 20 is ideal for a growing family, the master bedroom located at the front of the home flowing into the media, kitchen and entertainment areas.
- This Home design is perfect for a tighter location as the house design flows down and out towards the back of the home.



FLOOR PLANS

# THE SAVANNAH FACADE RANGE

The Savannah range is complimented by 5 facade options that are offered on this design. All facades from Lily Homes are quoted in face brick, however all other architectural elements still remain. With a wide range of variety between each facade and customisation encouraged, there is all the more reason the Savannah range is for you.



VOGUE



DESIGNER



EXECUTIVE



WOODLANDS



TRADITIONAL

Save  
with



.....

Call our team on **9826 9777** or visit us at one of  
our two locations or online **[lilyhomes.com.au](http://lilyhomes.com.au)**

Terms and conditions apply.